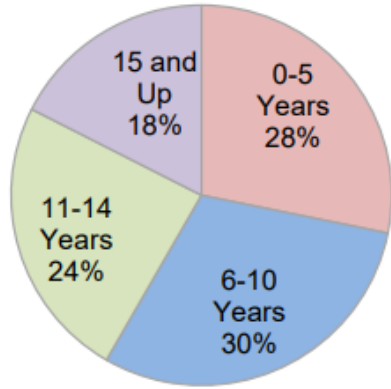




LIVE WELL  
SAN DIEGO

# CHILD AND FAMILY WELL-BEING (CFWB)

### Age of Children In Referrals



**38,754 abuse/neglect reports were made to the Hotline which represents 67,694 children.**

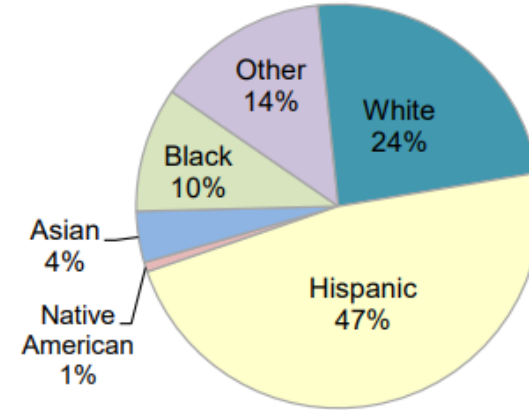
*(Children can be counted more than once if referred multiple times throughout the year)*

**18,980 of those reports, including 36,255 of those children were assigned for investigation.**

**243 New Voluntary Services cases were opened during the year.**

**628 new petitions were filed on behalf of children.**

### Ethnicity of Children In Referrals



### Children Receiving Services as of July 1, 2024

2,182 children and youth in an open case:

- 211 young adults in Supportive Transition
- 419 children were receiving services in their home.
- 1,552 children were in out-of-home care:
  - 39% Kinship Care
  - 52% Non-kinship care
    - 24% Resource Family Homes
    - 13% Guardian and Court Specified Homes
    - 7% Foster Family Agency Homes
    - 4% Group Home
    - 3% San Pasqual Academy
    - 1% Temporary Shelter Care Facility
  - 1% Adoptions pending/finalized
  - 8% Other (e.g. trial home visits with parents, non-foster care placements)

### Allegation Types

General Neglect	43%
Emotional Abuse	30%
Physical Abuse	33%
At Risk, Sibling Abused	23%
Sexual Abuse	19%
Severe Neglect	3%
Caretaker Absence/Incapacity	1%
Exploitation	0.4%

Children may have multiple allegations, therefore the percents will not equal 100%

278 children were placed in adoptive homes during FY2023/24

# Creating the Vision: Family Strengthening Focus



# BOARD OF SUPERVISOR'S APPROVES!

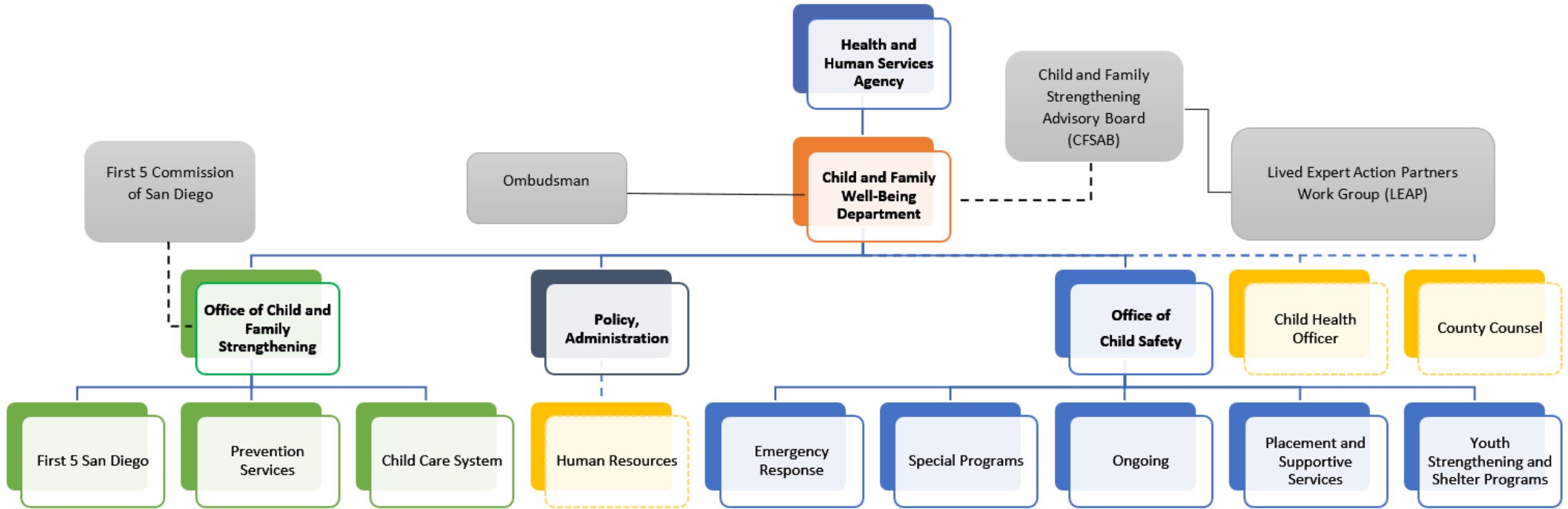
## COUNTYNEWSCENTER

DIRECT TO YOU FROM THE COUNTY OF SAN DIEGO



**February 28, 2023**  
The BOS unanimously adopts the Child and Family Well-Being Department to better address equity and improve outcomes for children and families in a more holistic way!

# CFWB Department



# Office of Child & Family Strengthening



## First 5 San Diego

- *Promotes the health and well-being of young children and pregnant individuals during the most critical years of development, from prenatal to five years of age.*



## Prevention and Early Intervention Services

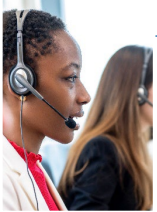
- *Links families to prevention services so that all children are safe, all families are nurtured to build protective factors, and systems create equitable pathways to wellness.*



## Child Care System Coordination

- *Increases and strengthens child care provider capacity and provides equitable access to the region's quality of early childhood education and care.*

# Office of Child Safety



## Emergency Response (Child Abuse Investigations)

- Investigate reports of suspected child abuse and neglect and determine if further intervention is needed to keep children safe



## Extended Foster care

- Provides continued care benefits and services to youth ages 18 to 21 to support their transition toward adult independence.



## Ongoing ( Foster care and Adoption Services)

- Social workers work closely with the courts and legal partners to support a Kin-First Culture, meaning we strive to place children with relatives whenever possible, and provide services to reunify families, ensuring the child's well-being and safety are at the forefront.



## Placement & Supportive Services

- Recruits and retains resource families; assists social workers with identifying placement matches for children in foster care



## Youth Strengthening & Shelter Programs

- Polinsky Children's Center - Serves as a 10-Day Temporary Shelter Care Facility licensed by the State of California to meet the needs of the children taken into protective custody.
- San Pasqual Academy - Provides a multi-purpose continuum of care campus to meet the diverse needs of youth. This includes comprehensive resources to foster youth ages 12 to 19 with a stable and caring home, quality individualized education, and the skills needed for independent living.

# Drivers for Family Strengthening New Structure

LIVE WELL SAN DIEGO

EQUITY

FRAMEWORK FOR  
OUR FUTURE

PREVENTION  
PATHWAY



Building Better Health, Living Safely, and Thriving



# Intended Outcomes of Transformation

- Increase support for families.
- Promote family strengthening efforts.
- Reduce the impact of trauma, adverse childhood experiences, and child maltreatment.
- Move toward an equitable, prevention-focused operating model focused on early intervention.



# Community Engagement

Lived Experience  
Groups



Community Based  
Organizations

Tribal Partners

San Diego County  
Residents

# What we've heard from the community...



A. Guardado, MSW and S. Glass, MSW (c) 2024

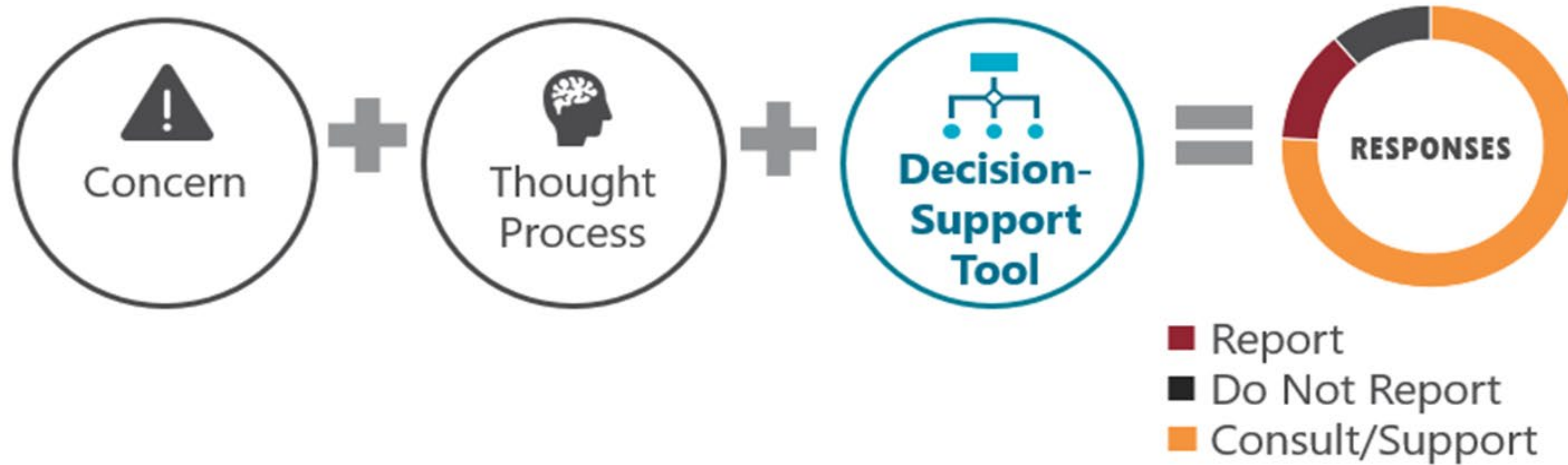
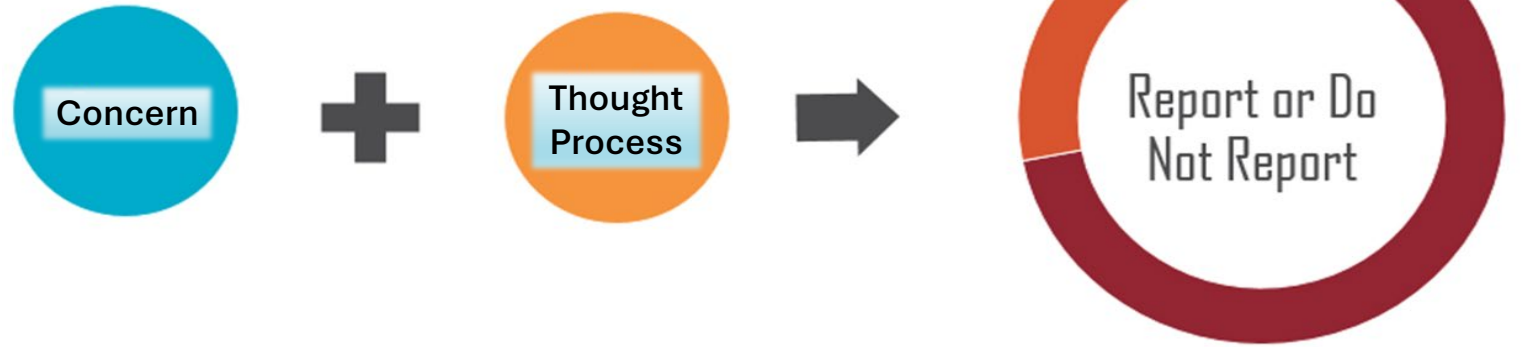




# Practice Innovations

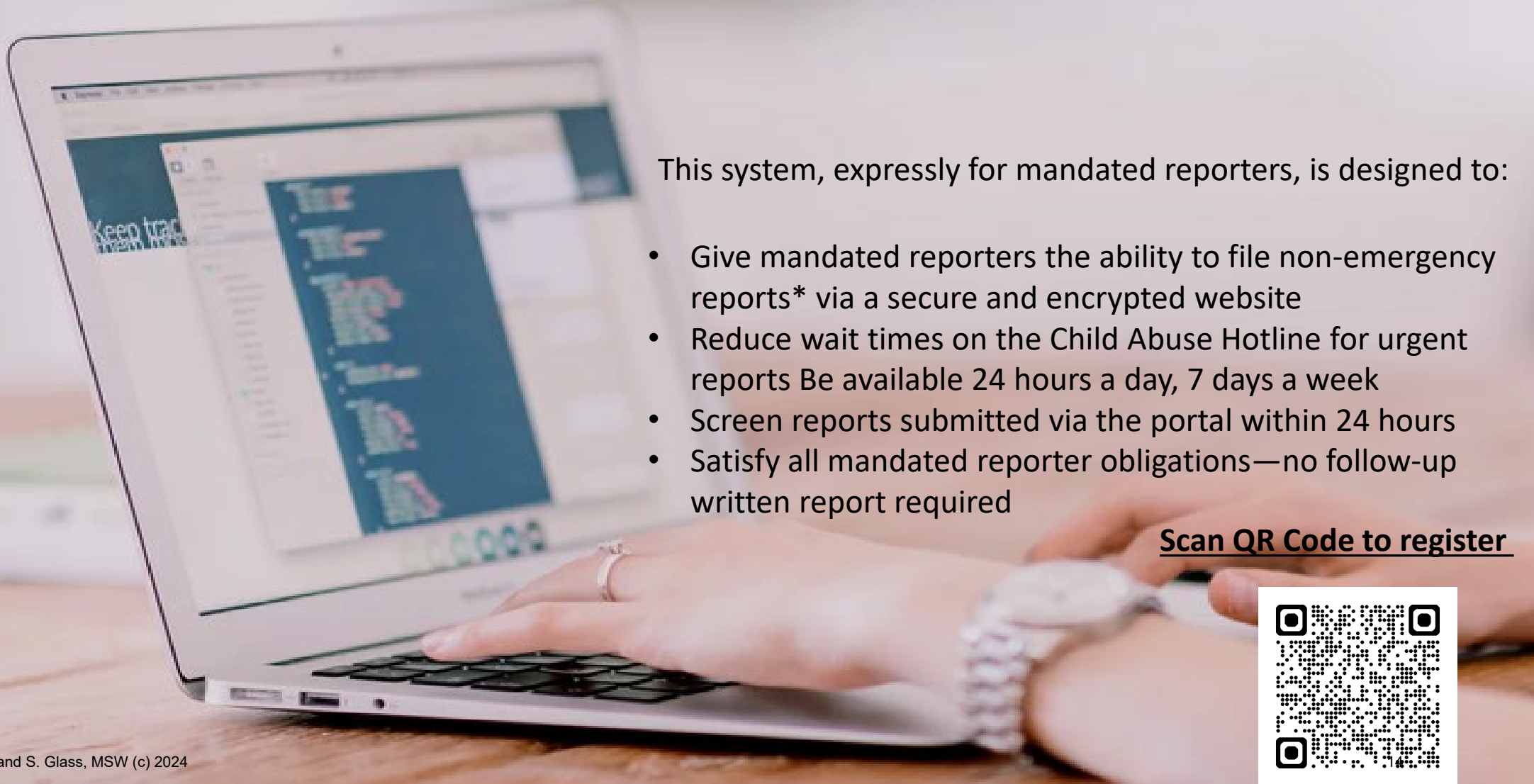
# Mandated Reporting to Community Supporting

## Current System



## Paradigm Shift

## CHILD AND FAMILY WELL-BEING ONLINE MANDATED REPORTER SYSTEM



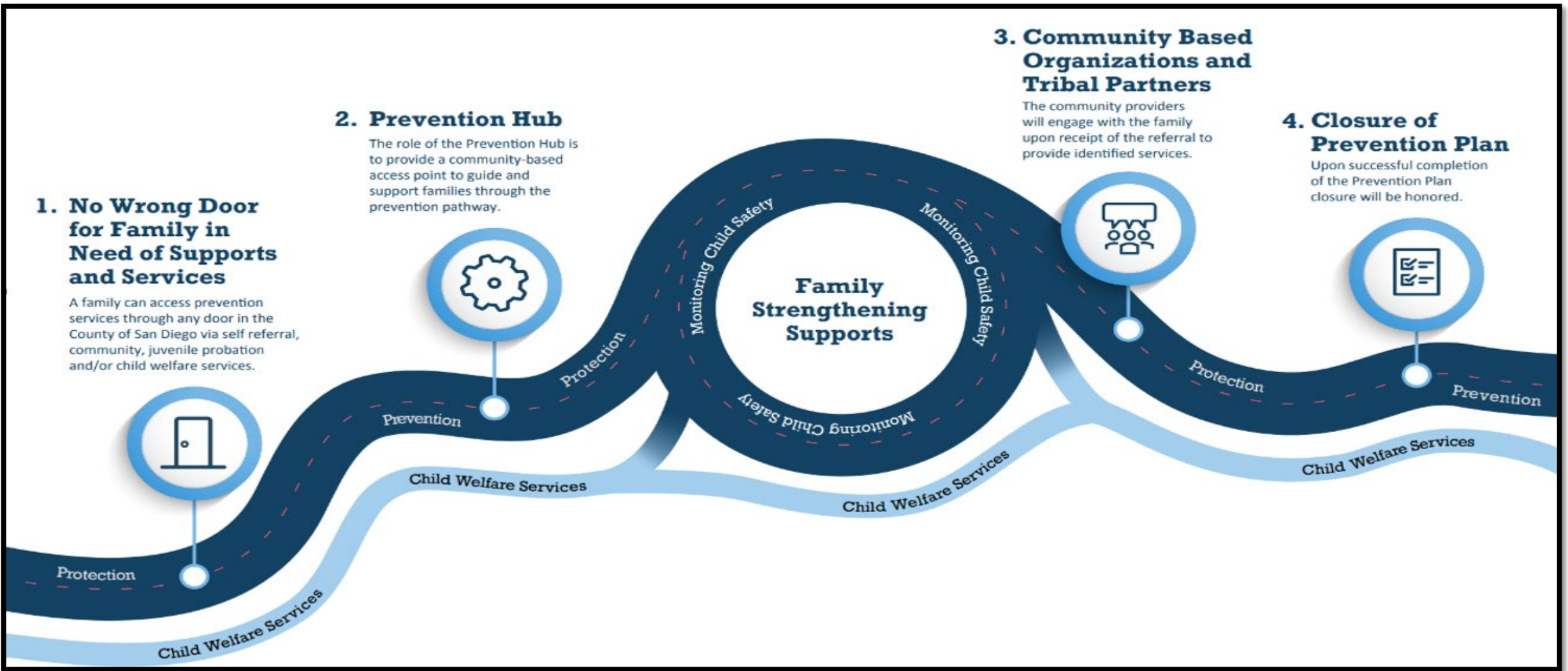
This system, expressly for mandated reporters, is designed to:

- Give mandated reporters the ability to file non-emergency reports\* via a secure and encrypted website
- Reduce wait times on the Child Abuse Hotline for urgent reports Be available 24 hours a day, 7 days a week
- Screen reports submitted via the portal within 24 hours
- Satisfy all mandated reporter obligations—no follow-up written report required

**Scan QR Code to register**



# PREVENTION HUB PATHWAY



# Fostering Academic Success in Education (FASE)

**The Fostering Academic Success in Education (FASE)** program aims to provide a comprehensive package of wrap-around supportive services to youth who enter the child welfare system, onsite in schools to enable them to reach educational success in high school and beyond. Findings from the FASE program indicate the program is very effective in improving:

- foster youth GPA
- graduation rates
- school attendance
- overall youth efficacy and empowerment with respect to mental health, and
- meaningful opportunities for youth participation in the planning process for their future





# Childcare Blueprint

## GOALS



The childcare workforce is well trained, supported, valued as a profession, and paid competitive wages.

Safe and quality facilities are developed and renovated to expand childcare programs, particularly in geographic areas where childcare is scarce or where family demand outpaces supply.

All families have access to childcare that meets their needs and preferences and supports their children's learning, physical and mental health, and social-emotional development.



# Childcare System Innovations

- SDCOE Workforce Investment Program:
  - Workforce Retention Stipend
    - 2,547
  - Tuition Stipend
    - Southwestern/ASU / Mesa / SDSU
  - Business coaching
- Shared Services Alliance
  - 105 providers
  - Business development and growth
  - Marketing

The infographic features a teal background with white and purple speech bubbles. At the top left, a woman with red hair sits at a desk with a laptop. To her right, a purple speech bubble contains the text 'Apply now through the Workforce Registry: San Diego County Retention Stipend'. Below this, a light green speech bubble lists eligibility criteria. To the right, a white speech bubble shows a man with glasses holding a baby, with text stating 'Priority will be given to those working with children ages 0-3 and in child care deserts.' At the bottom left, a pink speech bubble shows a woman in a hijab with a question mark icon above her, and text that says 'For more information scan the QR code'. At the bottom right, a yellow speech bubble shows a woman and child painting, with a QR code and a 'Scan here' button. A white speech bubble at the bottom center contains the text 'Limited number of stipends based on funding availability.'

Apply now through the Workforce Registry: San Diego County Retention Stipend

Priority will be given to those working with children ages 0-3 and in child care deserts.

Eligibility criteria includes:

- Reside in San Diego County
- Employed for nine continuous months in child care in San Diego County
- Complete at least two hours of workforce advisement
- Participate in the completion of professional development plan

For more information scan the QR code

Scan here

Limited number of stipends based on funding availability.

# Bringing all the Pieces Together



# Bringing all the Pieces Together



**First 5**



**Child Welfare Services**



**Prevention Pathway**



**Positive Parenting**



**Family Income for Empowerment**



**Child Care Systems  
(Child Care Blueprint)**





## Engage San Diego County

Welcome to the County of San Diego's online engagement platform! Here, it's easy to learn about projects, share your thoughts, and help make a difference in your community.

[Engage With Us](#)

# Stay Connected with Us!

A. Guardado, MSW and S. Glass, MSW (c) 2024

## Child and Family Well-Being



The County of San Diego (County) has developed the **Child and Family Well-Being (CFWB) Department** to fundamentally shift how children, youth, families, and communities are supported. We want to prevent children and youth from entering the child welfare system and create a partnership with families, leveraging their experience, to hold them as the experts in keeping their children safe.

### What is the Child and Family Well-Being Department?

The CFWB Department is the County's new approach to empowering children, youth, and families to have the support, connections, and resources to be healthy and remain together (without system involvement).

The new department integrates the First 5 Commission of San Diego, Child Welfare Services, childcare services, and other critical resources to partner with children, youth, and families.

### What is the goal of the CFWB Department?

A community conversation about strengthening San Diego families - watch video here



### Who's Listening

**Kimberly Giardina**

Director  
Child and Family Well-Being  
Department

Email [Kimberly.Giardina@sdcounty.ca.gov](mailto:Kimberly.Giardina@sdcounty.ca.gov)



**Alethea Arguilez**

Executive Director, First 5  
San Diego  
Assistant Director, Office of  
Child and Family  
Strengthening

Email [Alethea.Arguilez@scounty.ca.gov](mailto:Alethea.Arguilez@scounty.ca.gov)



The Engage Website is available 24/7 with important information about CFWB

[www.engage.sandiegocounty.gov/cfwb](http://www.engage.sandiegocounty.gov/cfwb)





LIVE WELL  
SAN DIEGO

# Resources

County of San Diego Child And Family Well-Being

[Child and Family Well-Being | Engage San Diego County](#)

County of San Diego Comprehensive Prevention Plan

[San-Diego-CPP-Addendum-merged-final-version.-6.8.2023.pdf \(caltrin.org\)](#)

County of San Diego Child Care Blueprint

[San-Diego-County-Child-Care-Blueprint.pdf \(sdchildrenfirst.org\)](#)



## Questions and THANK YOU!

Alfredo Guardado, Assistant Director CFWB Office of Child Safety  
[Alfredo.Guardado@sdcounty.ca.gov](mailto:Alfredo.Guardado@sdcounty.ca.gov)

Sarah Glass, Deputy Director CFWB Office of Child & Family Strengthening  
[Sarah.Glass@sdcounty.ca.gov](mailto:Sarah.Glass@sdcounty.ca.gov)